

auraa
design

FLORENCE

Auraa Design

FLORENCE



01

FLORENCE

02



The collection is inspired by a look into FLORENCE called “The last total style” of history. A look from the design for a reinterpretation in a contemporary key. FLORENCE was created with influences from neoclassicism, cubism, African, Egyptian and Japanese. Meaning a status from the distinction and classical intemporalty. A cult to precision and quality.

La colección se inspira en una mirada al FLORENCE llamado “El último estilo total “ de la historia. Una mirada desde el diseño para una reinterpretación en clave contemporánea. El FLORENCE se creó con influencias del neoclasicismo, cubismo, arte africano, egipcio y japonés. Significar un status desde la distinción y la intemporalidad clásica. Un culto a la precisión y la calidad.

La collection est inspirée par un regard sur FLORENCE intitulé “Le dernier style total” de l'histoire. Un coup d'œil de la conception pour une réinterprétation dans une clé contemporaine. L'Art Déco a été créé avec des influences du néoclassicisme, du cubisme, de l'art africain, égyptien et japonais. Signification d'un statut depuis la distinction et classic intemporalité. Précision et qualité.

Коллекция, вдохновленная стилем FLORENCE, который называют "последним всеобщим стилем" в истории. Взгляд FLORENCE с точки зрения дизайнера проявляется в современной интерпретации. Стил FLORENCE создавался под влиянием неоклассицизма и кубизма. Обозначить статус с помощью характерных черт и вневременной классики. Культ изысканности и качества.

FLORENCE



05

FLORENCE

06

FLORENCE



FLORENCE 1

“A cult to precision and quality”



FLORENCE



FLORENCE



FLORENCE



FLORENCE

17

FLORENCE

18





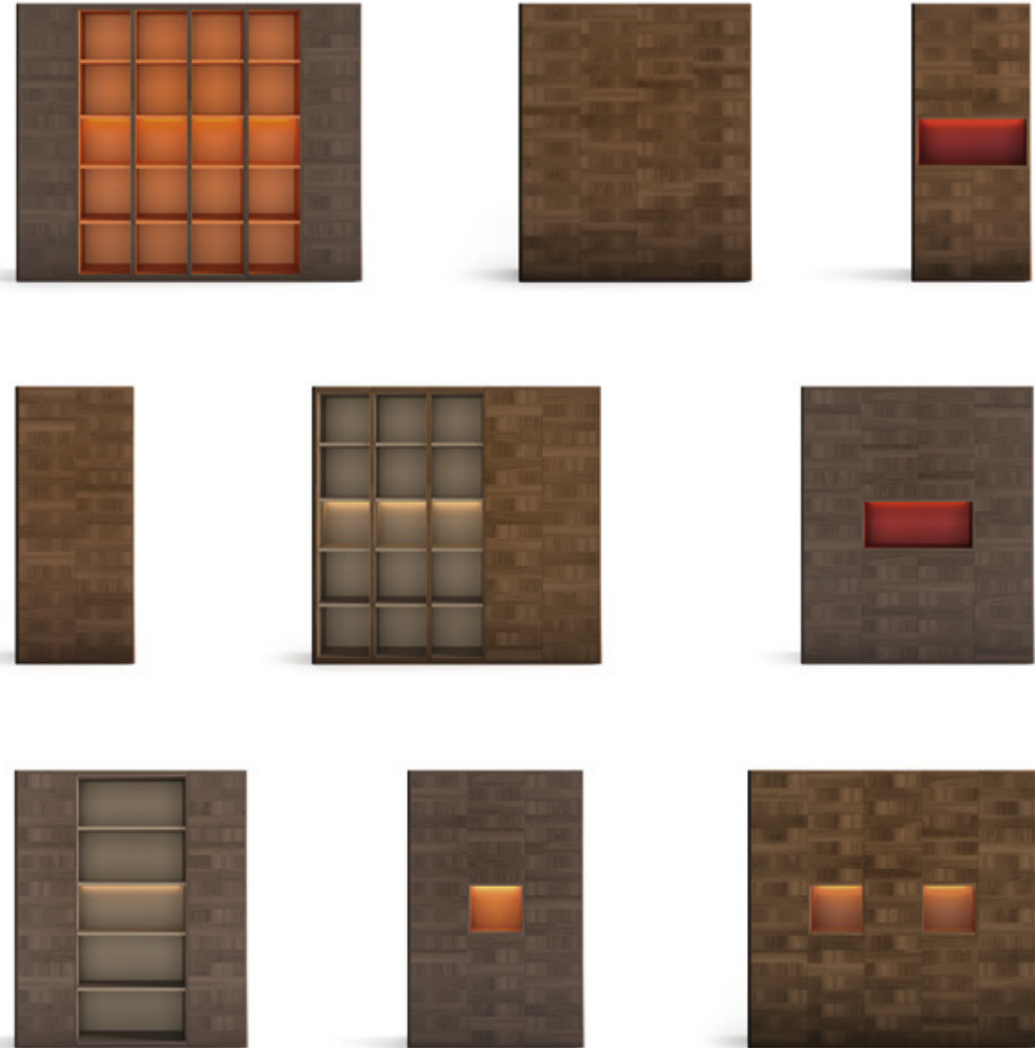
STORAGE / ALMACENAMIENTO / STOCKAGE / ХРАНЕНИЕ

In FLORENCE the storage system is modular and allows to create configurations of closed sets with doors or drawers and also as bookshelf, providing solutions for executive offices, conference rooms as well as for the home office.

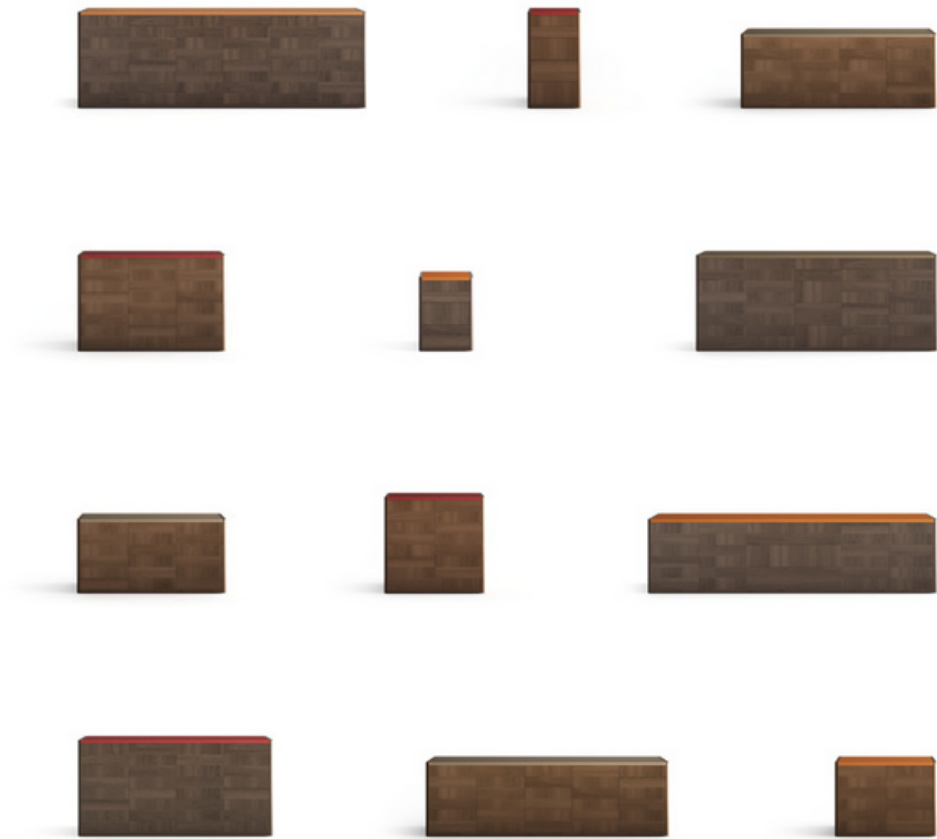
En la colección FLORENCE el sistema de almacenamientos es modular y permite crear configuraciones de conjuntos cerrados con puertas o cajones o abiertos como estanterías, resolviendo las necesidades para oficinas ejecutivas, salas de conferencia así como también para la oficina en casa.

Dans la collection FLORENCE, le système de stockage est modulaire et permet de créer des configurations de postes fermés avec des portes ou des tiroirs ou des étagères ouvertes, répondant ainsi aux besoins des bureaux de direction, des salles de conférence ainsi que du bureau à la maison.

В коллекции FLORENCE модульная система позволяет создавать различные комбинации закрытых шкафов с дверцами, выдвижными ящиками или же с открытыми полками, отвечая всем потребностям офиса для руководителей, переговорных, а также домашнего пространства.



“The modular system that allows to design and combine distinction and functionality.”





"FLORENCE adapts to the demands of today's equipment."



FLORENCE

27

FLORENCE

28



FLORENCE



**“Meaning a status
from the distinction
and classical
intemporality”**



FLORENCE 1

“More than just a piece of furniture. A multimedia space”



FLORENCE tables



H: 750 W: 2450 D: 2425



H: 750 W: 2200 D: 1000



H: 750 W: 1200 D: 1200



H: 750 W: 2400 D: 1200



H: 245 W: 575 D: 600



H: 390 W: 1000 D: 800



H: 580 W: 500 D: 300



H: 750 W: 2450 D: 2425



H: 750 W: 2450 D: 2425

FLORENCE multimedia



H: 2007 W: 1920 D: 500



H: 2007 W: 2910 D: 500

FLORENCE storage



H: 945 W: 525 D: 500



H: 945 W: 990 D: 500



H: 945 W: 990 D: 500



H: 720 W: 525 D: 500



H: 720 W: 990 D: 500



H: 720 W: 1455 D: 500



H: 945 W: 1920 D: 500



H: 945 W: 2385 D: 500



H: 945 W: 2850 D: 500



H: 720 W: 1920 D: 500



H: 945 W: 2385 D: 500



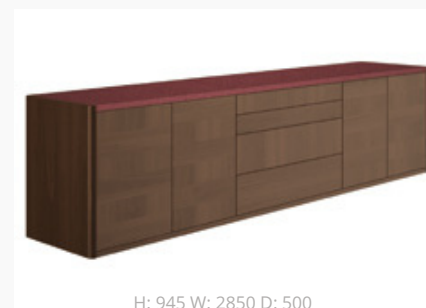
H: 945 W: 2850 D: 500



H: 1340 W: 1920 D: 500



H: 1340 W: 2850 D: 500



H: 945 W: 2850 D: 500

FLORENCE storage



H: 2260 W: 990 D: 500



H: 2260 W: 990 D: 500



H: 2260 W: 1455 D: 500



H: 2260 W: 2385 D: 500



H: 2260 W: 2385 D: 500



H: 2260 W: 2850 D: 500



H: 2260 W: 1920 D: 500



H: 2260 W: 1455 D: 500



H: 2260 W: 1920 D: 500



H: 2260 W: 2385 D: 500



H: 2260 W: 2385 D: 500



H: 2260 W: 2850 D: 500



H: 2260 W: 1920 D: 500



H: 2260 W: 1920 D: 500



H: 2260 W: 2385 D: 500



H: 2260 W: 2385 D: 500



H: 2260 W: 2850 D: 500



H: 2260 W: 1920 D: 500



H: 2260 W: 1455 D: 500



H: 2260 W: 1920 D: 500



H: 2260 W: 2385 D: 500



H: 2260 W: 2385 D: 500



H: 2260 W: 2850 D: 500



H: 2260 W: 1920 D: 500



H: 2260 W: 1920 D: 500

FLORENCE FINISHINGS

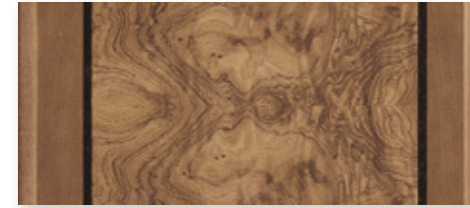


ESPRESSO



WALNUT

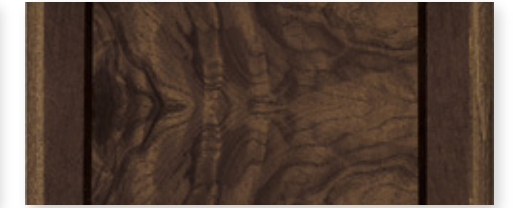
FLORENCE MOBLE FINISHINGS



ITALIAN WALNUT



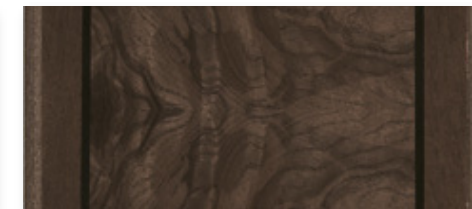
WALNUT



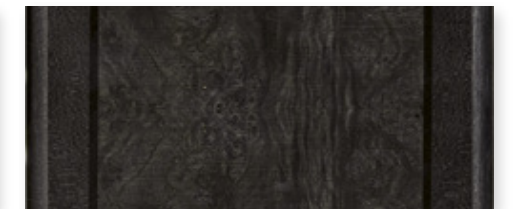
WENGUE



CHERRY

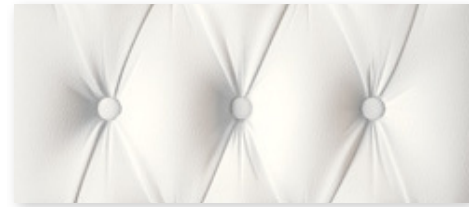


ESPRESSO

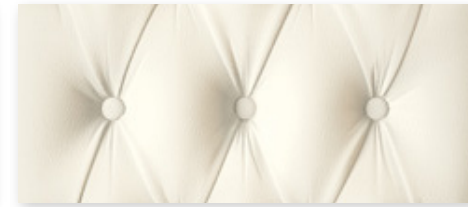


BLACK

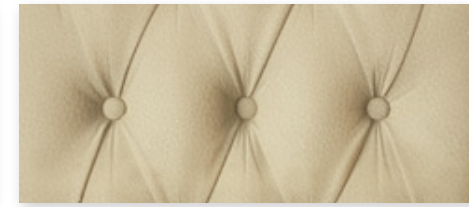
LEATHER FINISHINGS



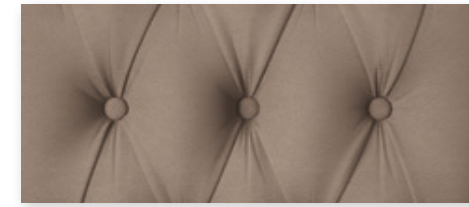
ICE



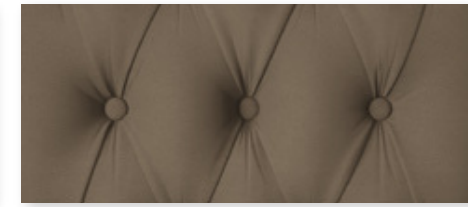
WHITE



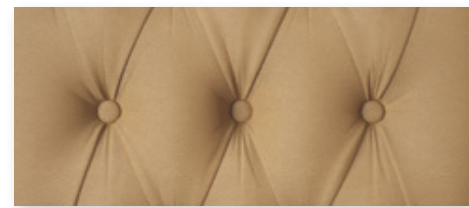
IVORY



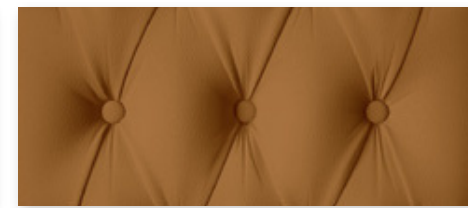
STONE GREY



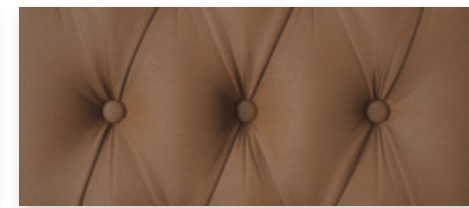
UMBER



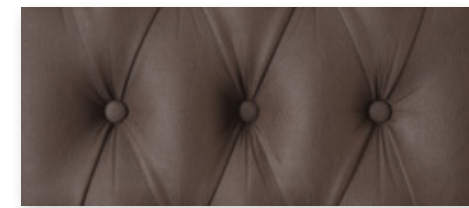
CAMEL



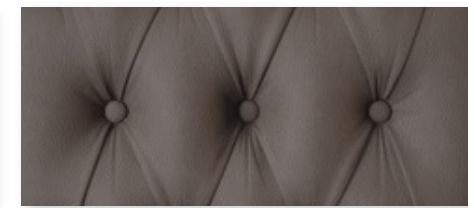
PUMPKIN



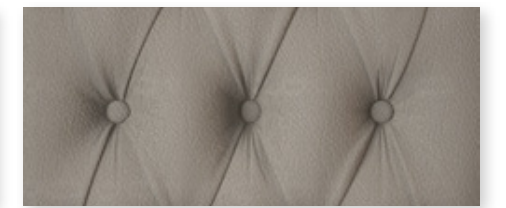
LIGHT BROWN



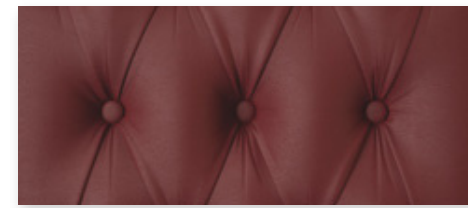
DARK BROWN



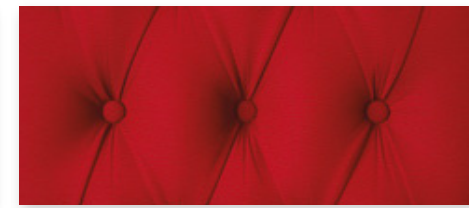
ANTHRACITE



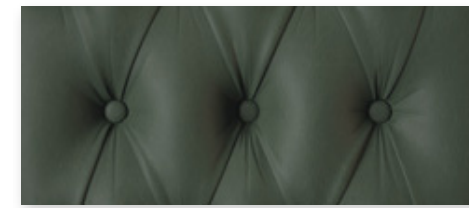
GREY



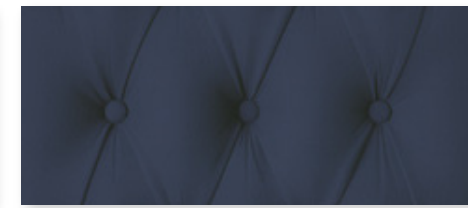
BORDEAUX



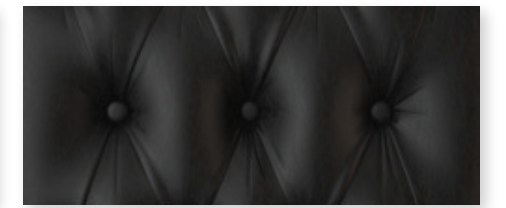
RED



GREEN

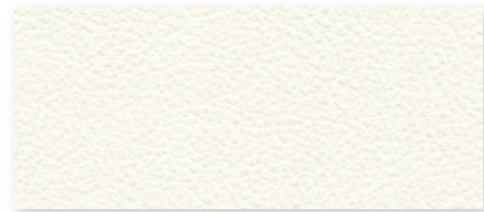


BLUE

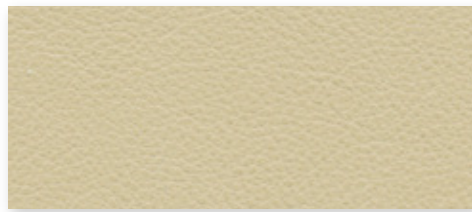


BLACK

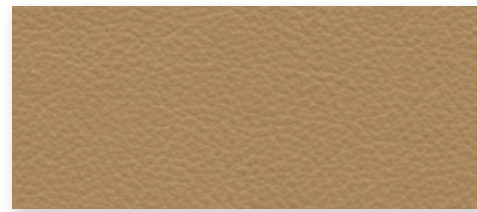
ECOLEATHER FINISHINGS



WHITE



IVORY



CAMEL



STONE GREY



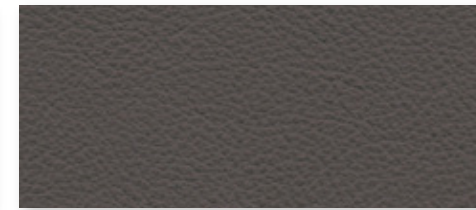
LIGHT BROWN



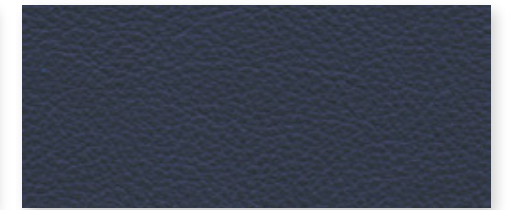
BORDEAUX



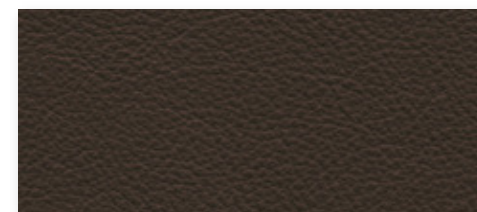
GREY



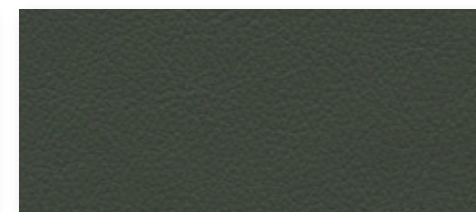
ANTHRACITE



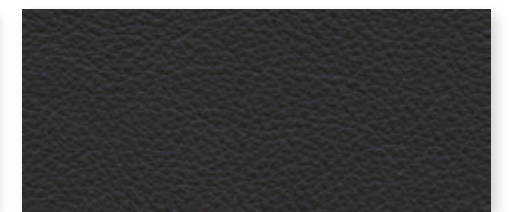
BLUE



DARK BROWN



GREEN



BLACK

BRONX FINISHINGS



BEIGE



CAMEL



BORDEAUX



BROWN



TAUPE



LIGHT GREY



ASH



ANTHRACITE

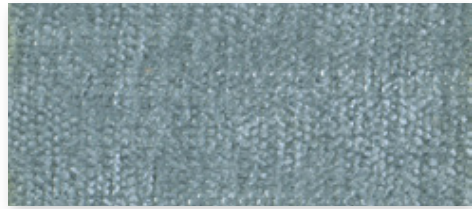


DARK GREY

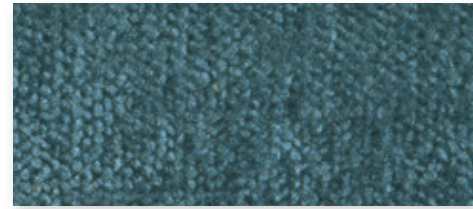


BLACK

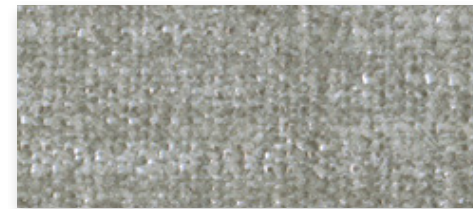
BOSTON FINISHINGS



SKY



TURQUOISE



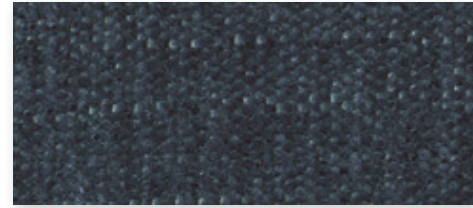
LIGHT GREY



MUSTARD



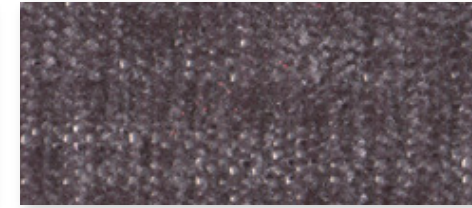
MOUSE



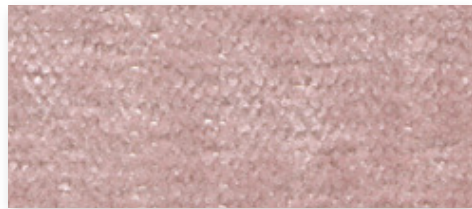
OCEAN



TRUFFLE



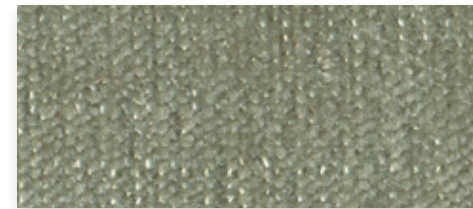
LAVENDER



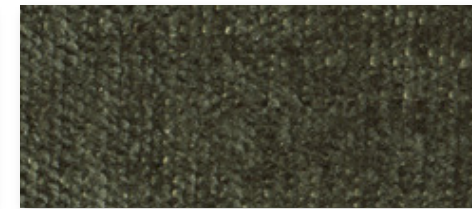
PINK



RED



GREEN



FOREST



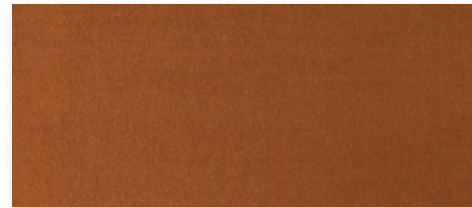
BLACK

VELVET FINISHINGS

51



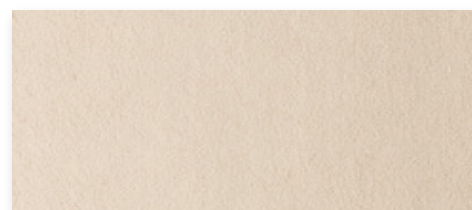
CUOIO



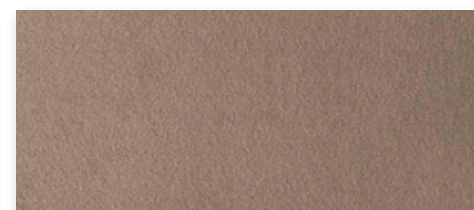
BRICK



ANTHRACITE



CHAMPAGNE



CHOCOLATE

52



MUD



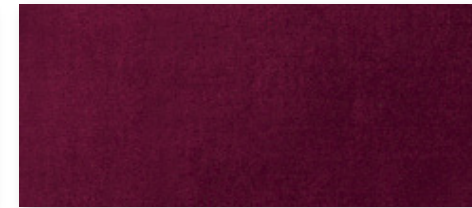
PETROL



DARK BLUE



LAVANDER



WINE

auraa design



Hub Spaces, 582 Honeypot Lane, Stanmore, HA7 1JS, UK
www.auradesign.co.uk
020 3915 8008
info@auradesign.co.uk

www.auradesign.co.uk