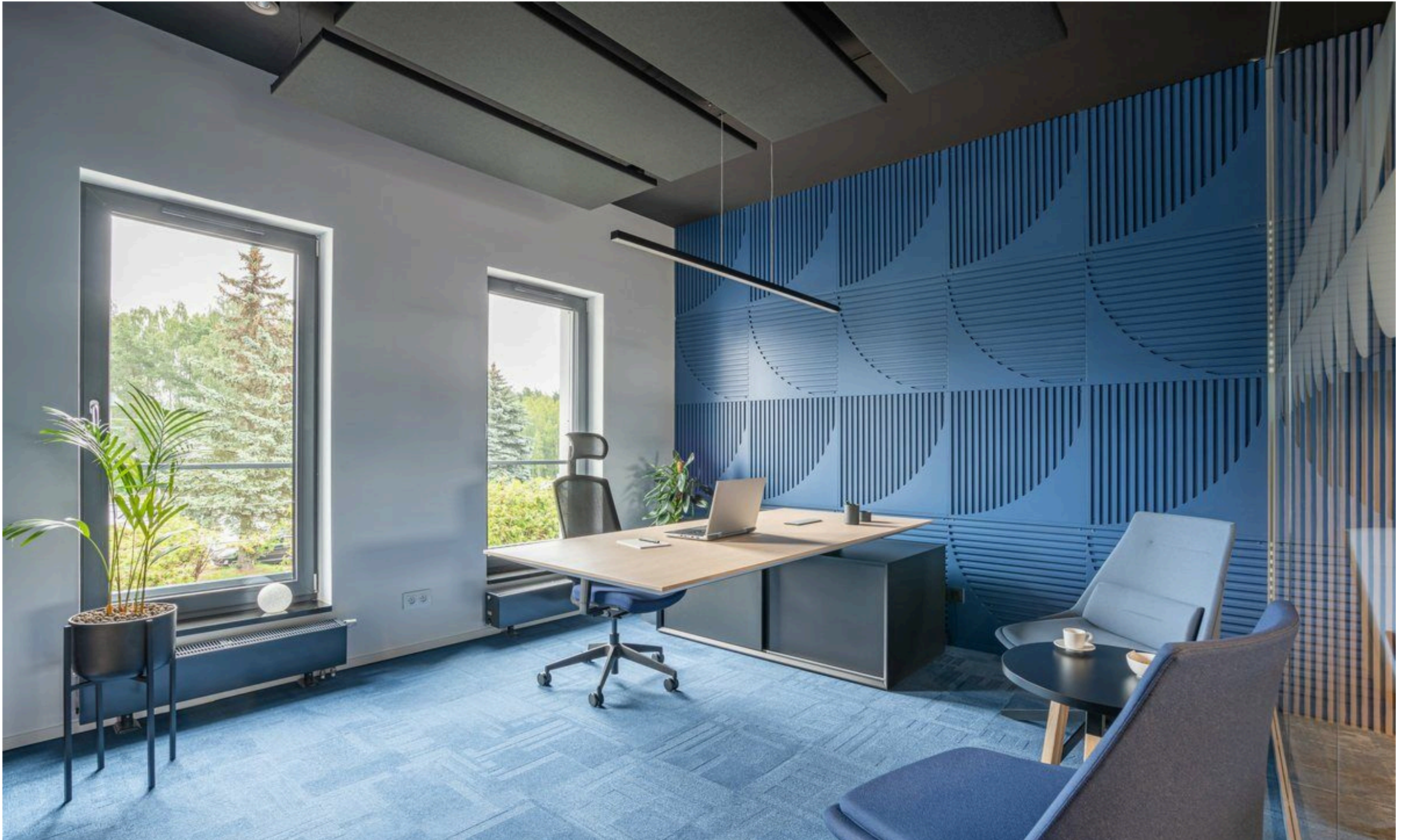
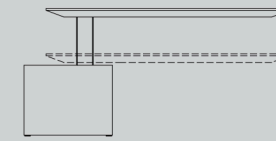


auraa
design

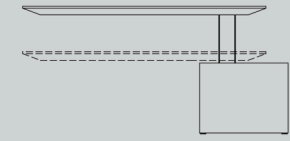
ELECTRA



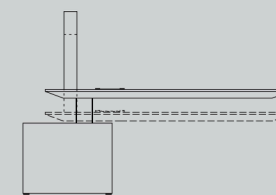
Designed to combine technology and visual appeal — with its height adjustment and cantilever worktop Electra is a next-generation desk.



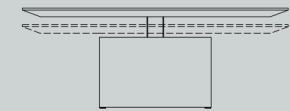
desk with managerial storage



desk with managerial storage



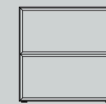
multimedia stand



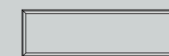
conference table



storage



storage



coffee table

Electra

It's against Electra but still sturdy and comfortable — Electra takes the idea of an executive desk to a whole new level.

With a large worktop supported on one leg and structure that seamlessly blends into the form, it brings a levitating surface to mind. Inspired by the essence of modern architecture, the minimalist form of Electra is fully integrated with technology.

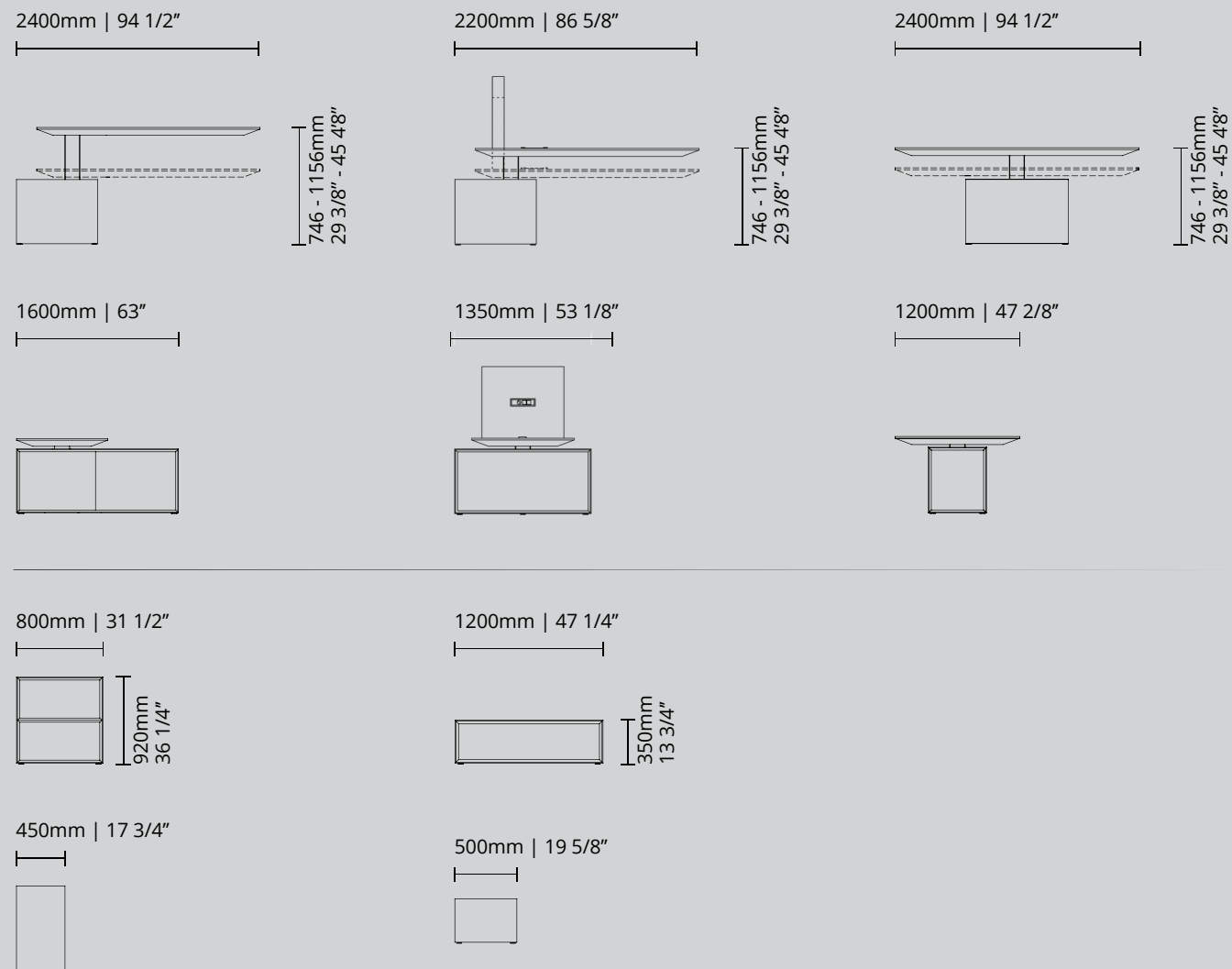
Electric height adjustment system ensures ergonomics. Working position can be smoothly changed from seated to standing, so that you can work at your highest potential. Featuring a handy storage, it's a highly functional solution designed with contemporary leaders in mind.



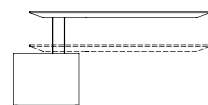
Electra

Whether furnishing a spot for one-on-ones or team meetings, it's best to pick smart solution that fuels the creative process. Designed to both please the eye and enhance efficiency, the Electra conference table and multimedia station as well feature height adjustment. Such a solution allows you to adjust the worktop up and down, providing users with

the autonomy to perform however best suit their task. Built-in sockets increase its functionality. Blurring the boundaries between work and home, the Electra coffee table allows for a more laid-back atmosphere. Bookcase and storage with drawers complete the look. These modular units can stand alone or be combined, so that they fit virtually any spatial situation.







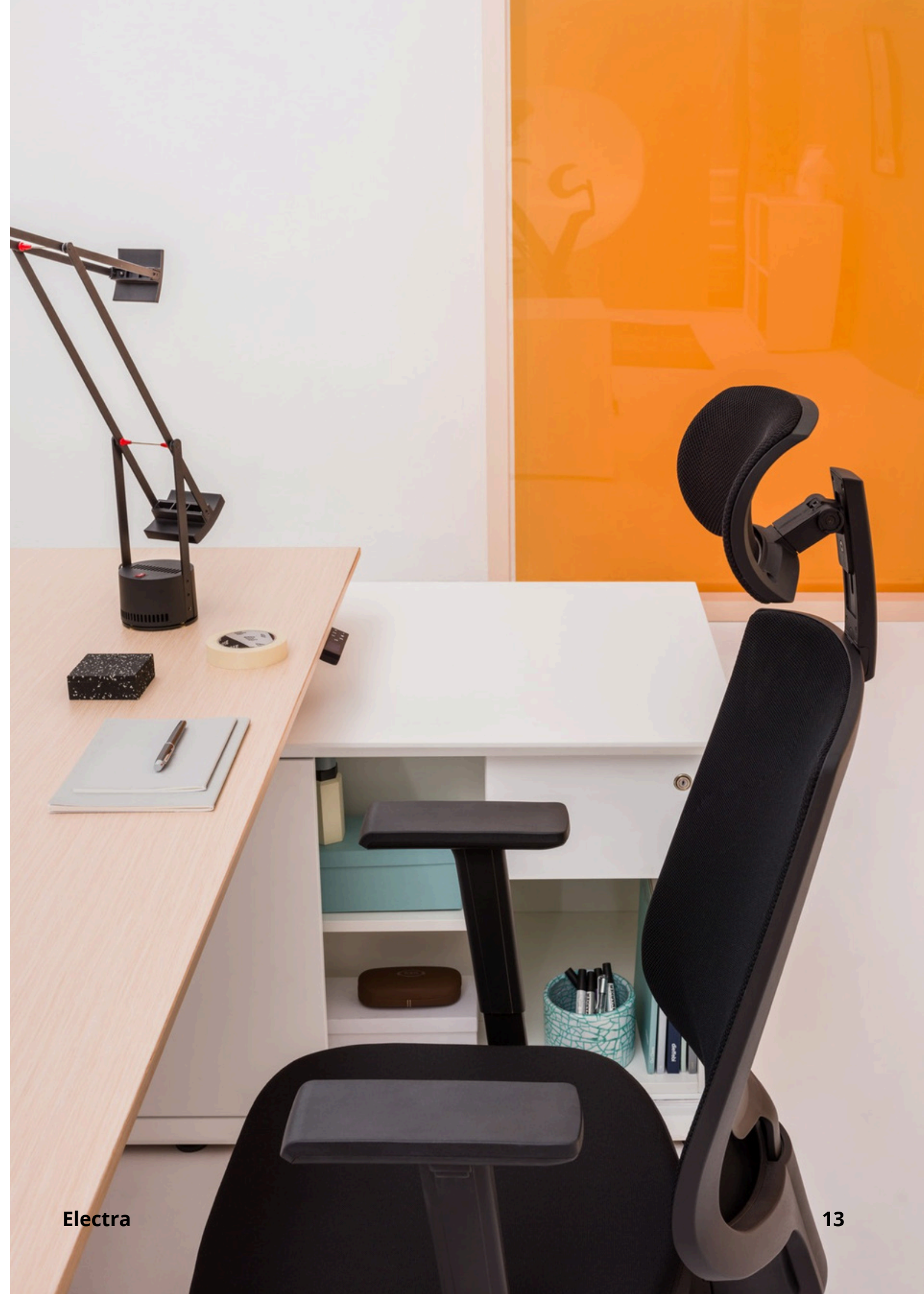
2400 / 1600 / 746
94 1/2" / 63" / 29 3/8"

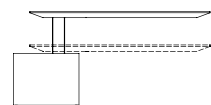


800 / 450 / 920
31 1/2" / 17 3/4" / 36 1/4"



1200 / 500 / 350
47 1/4" / 19 5/8" / 13 3/4"





2400 / 1600 / 746
94 1/2" / 63" / 29 3/8"



800 / 450 / 920
31 1/2" / 17 3/4" / 36 1/4"



800 / 450 / 920
31 1/2" / 17 3/4" / 36 1/4"





2400 / 1600 / 746
94 1/2" / 63" / 29 3/8"

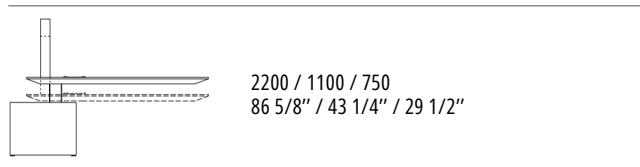


800 / 450 / 920
31 1/2" / 17 3/4" / 36 1/4"



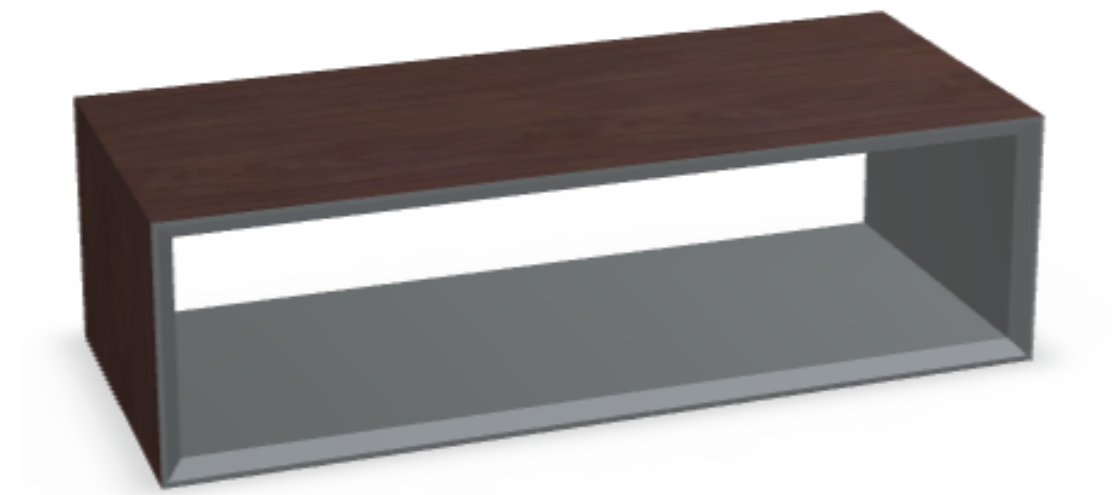
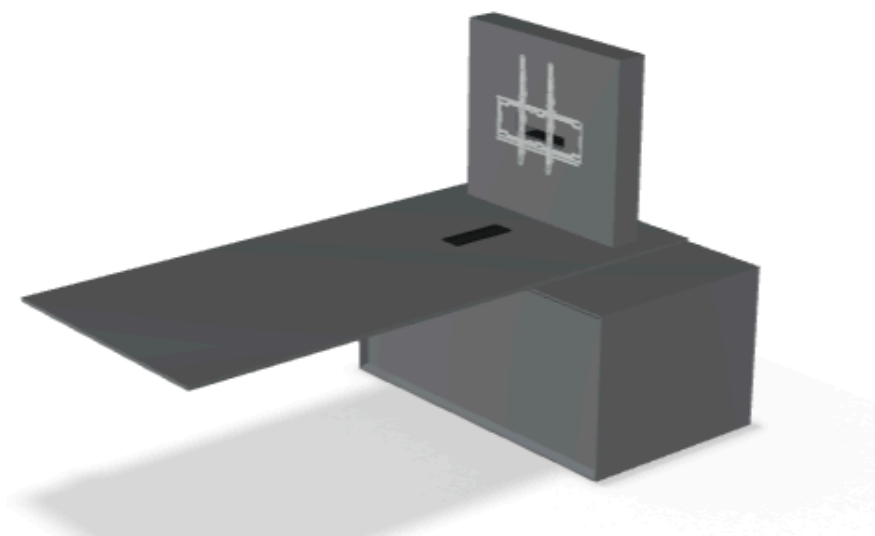
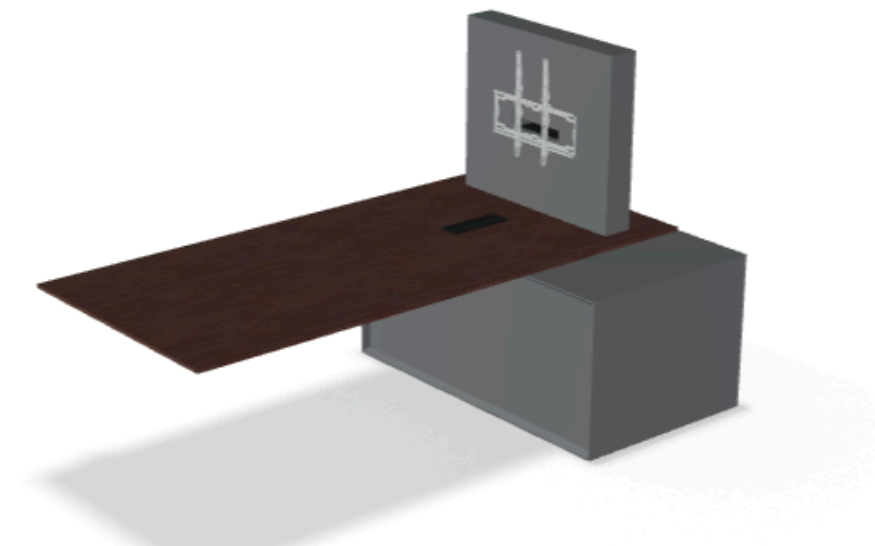
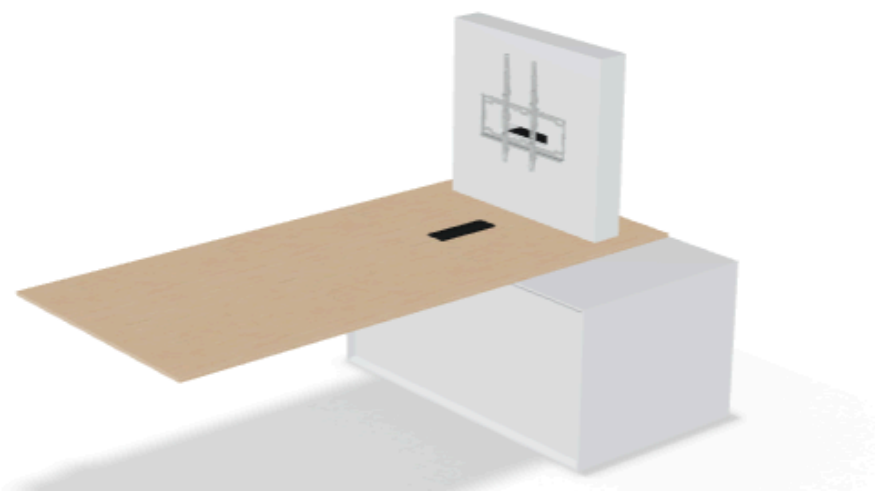
800 / 450 / 920
31 1/2" / 17 3/4" / 36 1/4"





Electra Colours





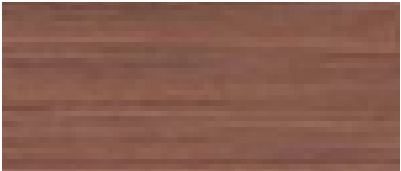
Electra Colours



Top, Exterior walls



Elm (Veneer)

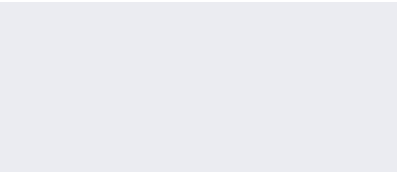


American Walnut (Veneer)



Graphite (HPL)

Leg, Interior walls



White



Anthracite

auraa
design



Hub Spaces, 582 Honeypot Lane, Stanmore, HA7 1JS, UK
www.auraadesign.co.uk
020 3915 8008
info@auraadesign.co.uk